

Who is wearing blue?

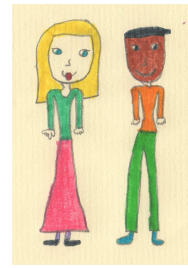
Oh, who is wearing blue?
Oh, who is wearing blue?
Please can you tell me,
Who is wearing blue?

Oh, who is wearing yellow?
Oh, who is wearing yellow?
Please can you tell me,
Who is wearing yellow?

Oh, who is wearing red?
Oh, who is wearing red?
Please can you tell me,
Who is wearing red?

Oh, who is wearing green?
Oh, who is wearing green?
Please can you tell me,
Who is wearing green?

www.kelanglaisprimaire.com © 2011



Who is wearing blue?

Oh, who is wearing blue?
Oh, who is wearing blue?
Please can you tell me,
Who is wearing blue?

Oh, who is wearing yellow?
Oh, who is wearing yellow?
Please can you tell me,
Who is wearing yellow?

Oh, who is wearing red?
Oh, who is wearing red?
Please can you tell me,
Who is wearing red?

Oh, who is wearing green?
Oh, who is wearing green?
Please can you tell me,
Who is wearing green?

www.kelanglaisprimaire.com © 2011

